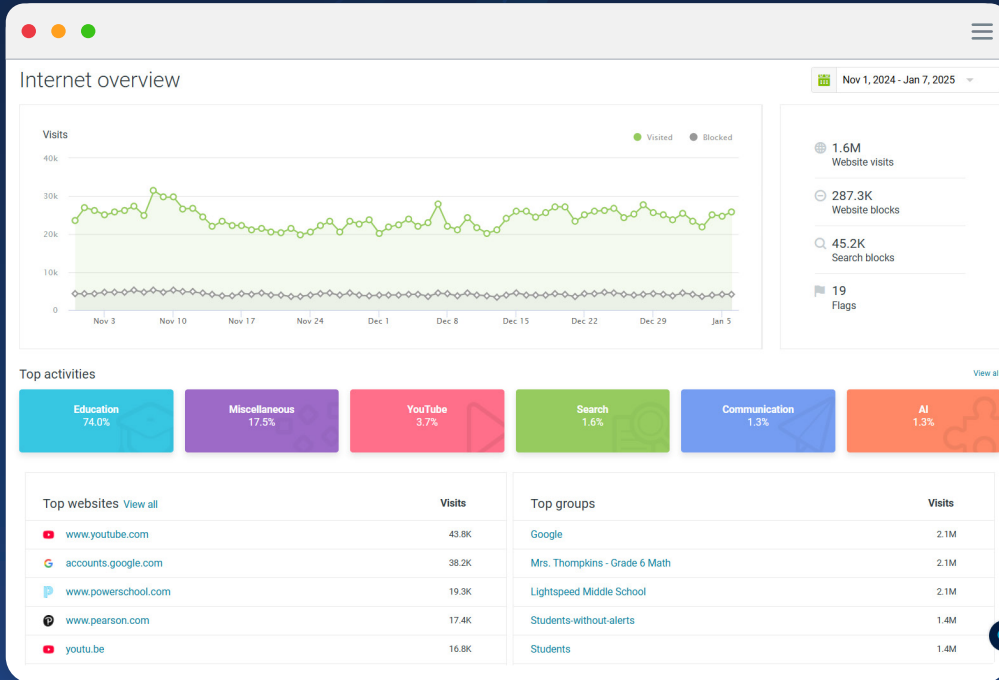




Lightspeed Filter™

Create secure & focused learning environments

Lightspeed Filter provides visibility and control of every digital interaction on and off the network, protecting students from cyber risks and distractions, while ensuring access and compliance.



3.5 billion security threat requests blocked in 2024



250+ million domains and videos categorised to date



22 million students' online activity categorised in real time



25 years expertise in building and managing filtering

What are the security risks?

Stop unpredictable domain-sharing content

Are we compliant?

Lock out devices

Who's trying to get around filtering?

Give access to school admins

Do I have all the information needed for audits?

Allow parents to see online activity

The most in-depth
Visibility & Control
to power exceptional learning environments

Time	URL	Access	Reason	Category	External IP
1:21:19 PM	https://facebook.com/favicon.ico?0.0377011124419...	Blocked asset	by category	Facebook	216.137.67.17
1:21:18 PM	https://code.org/	Allowed	by category	Education	216.137.67.17
1:21:18 PM	https://www.code.org/	Allowed	by category	Education	216.137.67.17

Smart Play
Video Demo
Smart Play is an education-focused, machine-learning categorization of videos that allows educational videos and always blocks mature videos.

Allow non-educational videos (this may contain mature content). Violence, Pornography, and Offensive material will continue to be blocked.

Algebra - Quadratic Formula
yaymath • 357K views • 4 years ago
"This is a story about a negative boy... who couldn't decide to go to a radical party..." for more info about this story, watch the video.

Quadratic Formula Pop Goes the Weasel
NikkiRose • 707K views • 7 years ago
Ok so I wanted to try and make my own animation for this, my teacher needed it to help students learn so why not? xD EVERYTHING

The Best of Cloud and Inline Filtering

- Deploy hybrid, scalable filtering on all popular devices + browsers, without the cost, latency, and single points of failure.
- Unlock fast troubleshooting with live activity reporting.
- Set read and write controls by user or group for policies, reports, and PII.

Security

- Security
- Security - Domain Sharing
- Security - Malware

Security - Nettools
Tools that may be used to bypass network security or content filtering. (e.g. VPN products, remote access products, tutorials on bypassing security measures, etc.)

Security - Proxy
Anonymous proxies, tutorials on using anonymous proxies, and tools that allow content filtering to be bypassed, such as language translation sites like translate.google.com and bing.com/translate

Security - Shorteners
Websites providing URL shortening services

Security - Translators
Language translation sites that do not honor filter restrictions

Security - Warez
Sites promoting illegal access and sharing of software and other copyrighted material

Prevent Distractions

- Build nuanced policies to manage TikTok, Discord, gaming, AI, and more.
- Ensure access to education-only content on YouTube with proprietary technology.
- Identify bypass attempts and blocked sites with trust, school, and user dashboards.

Categories

Block or allow access to websites by category.

Custom	Lockouts	Overridable	
<input checked="" type="checkbox"/> custom allow new new	<input type="checkbox"/>	<input type="checkbox"/>	▼
<input checked="" type="checkbox"/> Staff Allow Domains allowed just for Staff	<input type="checkbox"/>	<input type="checkbox"/>	▼
<input type="checkbox"/> TX SB 1893 Block	<input type="checkbox"/>	<input type="checkbox"/>	🔒 ▼
<input type="checkbox"/> Unknown .Zip and .Mov TLDs Control access to all .zip and .mov top-level-domain websites that are not known and confirmed by our human content categorization team.	<input type="checkbox"/>	<input type="checkbox"/>	▼

Enhance Security

- Get full on-device SSL decryption with no cloud proxying or VPN tunneling.
- Unlock fast categorisation of unknowns to prevent cyber risks.
- Get 7 cybersecurity-focused categories and integrations with MI6, Phishtank, vxIntel, and IWF.

Meet Regulations

- Out-of-the-box KCSIE compliance.
- Identify and block access to specific applications and websites to respond to legislative bans.
- Empower parents to view and manage online activity after school.

Trusted by these organisations and thousands more:



Lightspeed Systems®

Scan, call, or visit us online to get a demo:



+44 (0) 20 4534 5200
www.lightspeedsystems.com